

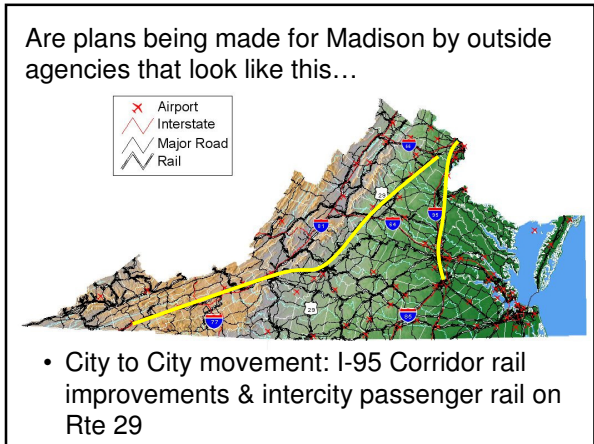
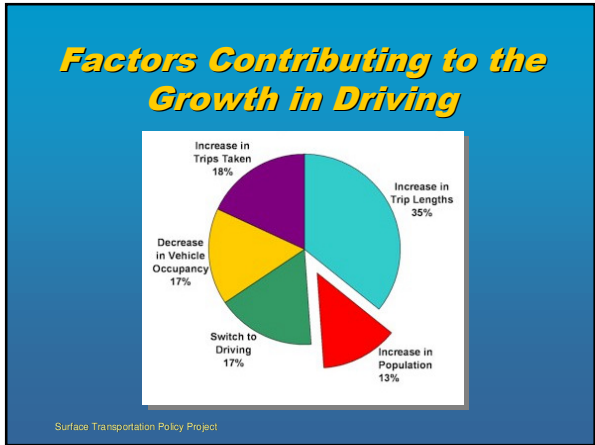
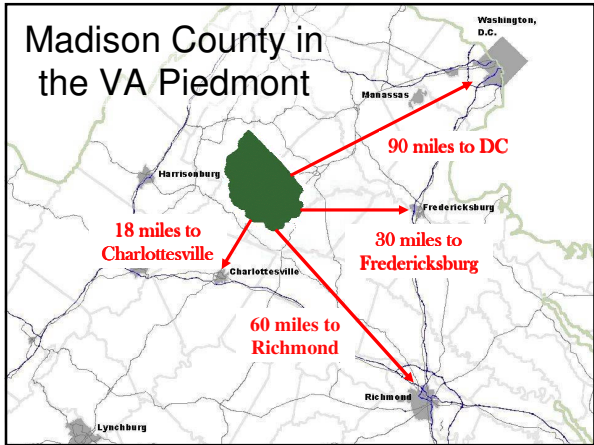
Madison County

A Rural Transportation Challenge

Meeting the needs of the community, the region and beyond...

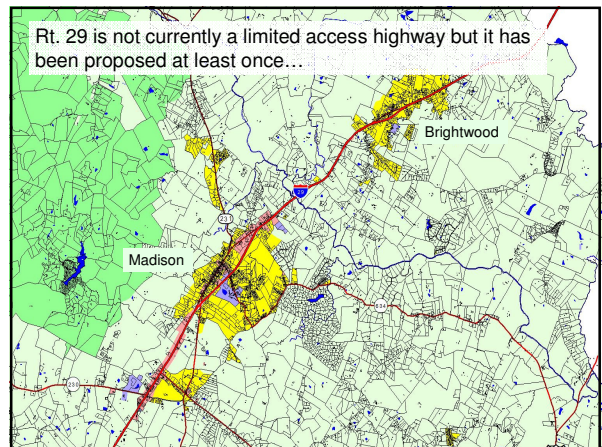
Madison County is still home to a large number of agricultural industries including small grain, dairy cattle, beef cattle, orchards, vineyards, livestock and horse farming.

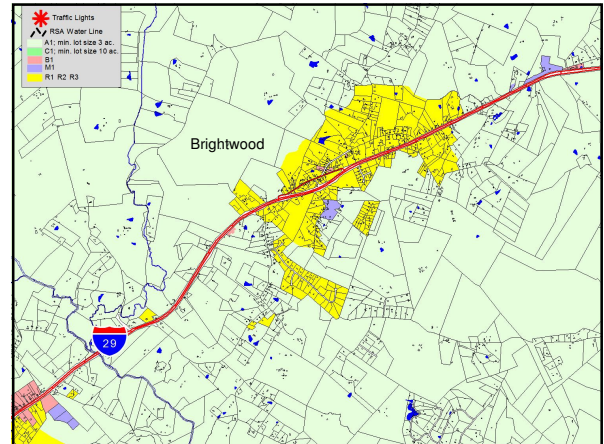
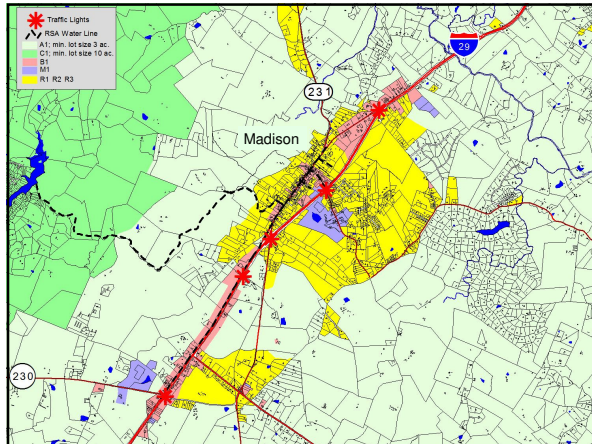
Madison remains one of the last jurisdictions in the 29 corridor still defined as "rural."



Madison's Comprehensive Plan ...

"Assure that planning for the Route 29 Corridor takes into account the natural beauty of the county and gives due consideration to scenic vistas for motorists."





Madison's Comprehensive Plan ...

Designate along both sides of Route 29, a *Highway Corridor Overlay District* for commercial, industrial, institutional, recreational, open space, agricultural and residential development with appropriate design standards and performance criteria for development within each area of the corridor.

Madison's Comprehensive Plan ...

Plan for the provision of **public water and sewer** in appropriate areas of the Route 29 Corridor.

Madison's Comprehensive Plan ...

Develop and **adopt performance criteria** to ... include such items as lighting, setbacks, site coverage, building design and location, landscaping and screening, location and size of signs, and location and screening of parking, loading and storage areas.

Madison's Comprehensive Plan ...

Continue (to enforce) a minimum (distance) of **900 feet between entrances** on Route 29.



Madison's Comprehensive Plan ...

Identify scenic vistas and develop a program for protecting their character.

Encourage the retention of trees within the Corridor and promote the planting of new trees to protect and enhance the visual quality of the Corridor.



Madison, just like every other county, is challenged by pressures to develop and to keep up with transportation infrastructure needs, while making smart land use decisions.